



PERFECT LITE

LIGHTING DESIGN SOFTWARE

UPGRADE NOTES FOR VERSION 4.87

(Released – June 2004)

1. INTRODUCTION

I'm still plodding away at converting the remainder of the DOS based Perfect Lite to a true 32-bit Windows application. The last module released was the replacement for the **SAASTAN – User Interface** now called **Vehicular Traffic Lighting**, see Section 5. Nonetheless, some other changes and enhancements have been made to theite of programs which I'm now making available.

This upgrade is only minor in nature but significant in regard to reliability of the software when run under Windows NT/2000/XP.

Version 4.87 contains enhancements that affect most of the modules in the package. The affected program modules will be all that is distributed with this upgrade.

As always, I am open to suggestions on future improvements, so if you have any please give me a ring on **(07) 3275 2406** or **0417 732 763** or send me an email.

Complete details of the full range of my software is on the Web at:

Home Page: www.perfectlite.com

Email address: support@perfectlite.com

2. PERFECT LITE MENU

The first menu displayed when you start the DOS Perfect Lite (Ple.exe) is shown in Figure 2.1. The following sections detail the changes/enhancements to the various modules selected from this menu.

```
[ PERFECT LITE MENU ]
Program setup
Luminaire Library manager...
Exterior lighting design...
Minor road lighting design
Zebra crossing lighting design
SAASTAN - User Interface...
Upward Waste Light Ratio
Terminate Perfect Lite
```

Figure 2.1

2.1. Program setup

- Printer description field increased from 50 to 64 characters (Page 4).
- Measurement of the screen size is now done on a text screen rather than a graphics screen – this is always measured 'full screen'.

2.2. Exterior Lighting design

See Section 3 below, for details on the enhancements found under this menu selection.

2.3. Minor road lighting design

- Following the release of the Pedestrian Area Lighting code (AS/NZS 1158.3.1:1999) this software has essentially been superseded by the software described in Section 4. However, it has been maintained in the Perfect Lite suite of programs for the occasion where you might want to check a design done with the previous Category B or C.

2.4. Zebra crossing lighting design

No changes made to this module.

2.5. SAASTAN - User Interface

- The version of the **Uis97.exe** program shipped with this upgrade is **3.88b**.
- Allows the use of wildcard characters (eg. * and ?) to specify multiple I-tables files to process at the one time with result saved in a text file..
- Layout of the results has changed slightly.
- This program has effectively been superseded by a Windows application called "Perfect Lite – Vehicular Traffic Lighting" described in Section 5.

2.6. Upward Waste Light Ratio

- No changes made to this module.

2.7. Terminate Perfect Lite

- No changes to this choice from the menu.

3. EXTERIOR LIGHTING DESIGN MENU

Figure 3.1 shows the 'Exterior Lighting Design Menu' of version 4.87.

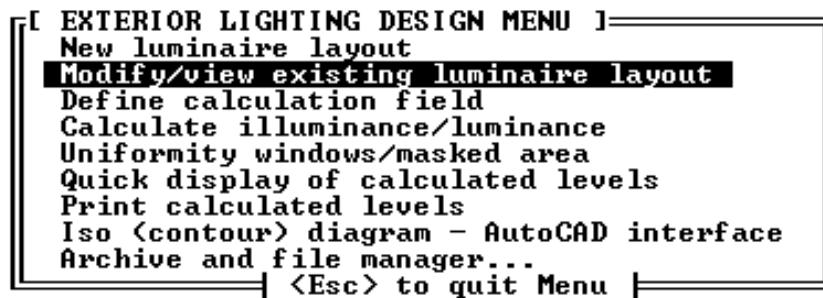


Figure 3.1

No significant changes to this group of modules.

4. PEDESTRIAN AREA LIGHTING SOFTWARE

The **Plepal.exe** program is still undergoing some minor changes and the version released now is **2.06**.

Changes include:-

- "Multi File Mode" added which allows the automatic processing of up to 200 l-table files against a single set of layout parameters.
- Due to access problems associated with Network security the configuration file (Plepal-user.cfg) is now stored in the same folder as the program (NOT root folder of C drive).
- Warning message is given if the Printer used for output is changed from the default printer.
- Program version/Date stamp on bottom of printouts has been modified slightly.
- Contact email address on 'About' screen changed.

Remember this program is not run from the Perfect Lite menu (shown in Figure 2.1) as it is a Window's application. To run it you click on the Windows **Start** button, select **Programs**, select **Perfect Lite** and click on **Pedestrian Area Lighting**.

5. VEHICULAR TRAFFIC LIGHTING SOFTWARE

The **Plevtl.exe** program is still undergoing some minor changes and the version released now is **4.01**.

Changes include:-

- A 'Tools' menu has been added which incorporates the 'Company name' and 'Manufacturer names' selections previously on the 'File' menu.
- New selection added to 'Tools' menu called 'Options' – this allows formatting (font name, font size & left margin width) of printed output.
- Due to access problems associated with Network security the configuration file (Plevtl-user.cfg) is now stored in the same folder as the program (NOT root folder of C drive).
- Curve spacing adjustment results can now be printed.

- Bug where the 'Save As' button on the results screen did not save the results to a file has been fixed.
- Program version/Date stamp on bottom of printouts has been modified slightly.

Remember this program is not run from the Perfect Lite menu (shown in Figure 2.1) as it is a Windows application. To run it you click on the Windows **Start** button, select **Programs**, select **Perfect Lite** and click on **Vehicular Traffic Lighting**.

6. PRINTING VIA THE PRINT MANAGERanother reminder

Most of the newer colour Canon Bubblejet, HP Deskjet and Epson Inkjet type printers, as well as many laser printers are not supplied with DOS printer drivers as they are meant only to operate with Windows 95/98/NT/2000/XP (the 'DOS is dead' syndrome). This subtlety may not be evident till you have purchased the printer and tried it out in your home or office. It will work quite well printing from any Windows application but not any DOS program. However, by this time it is a bit late to take it back to the shop to exchange it. Anyhow, there's nothing to exchange it with, as most (colour) printers now don't work with DOS anyway.

Another thing you may have noticed is that when previously running the "Program setup" module and completing screen Page 4, there may not have been a 'Printer type code' that exactly matched your particular printer and you may have had to experiment with alternate codes to get one to work. Also, if you print through a Network, especially on Windows 2000/XP, you can no longer 'capture' a printer port which means some printing in Perfect Lite is virtually impossible.

The printing method in versions 4.87 gets around all these situations. Even if you have an 'older' type printer (colour or black & white that does have DOS drivers) you may elect to print, from now on, through the Print Manager system described below. ***In fact, this will be the best method to use for future upgrades and operating system versions.***

For this new printing method to operate, it is **essential** that Perfect Lite is run in the Windows operating system (as you probably do anyway) preferably **in a window** on the screen rather than full screen.

When you select to run any of the following modules, either from the main Perfect Lite menu (see Figure 2.1) or execute the program directly from DOS:-

- Minor road lighting design (PLESPACE.EXE)
- SAASTAN – Use Interface (UIS97.EXE)
- Upward Waste Light Ratio (PLEUWLR.EXE)

you will now be presented with a menu of all the printers available on your PC that can be accessed through the Print Manager, see Figure 6.1 for an example. To select a printer simply move the highlight bar over the printer name you want and press <Enter>. For convenience, next time you run the same program, this same printer will be highlighted by default, so it is simply a matter of pressing the <Enter> key only, to make the selection (unless you want a different printer, of course).

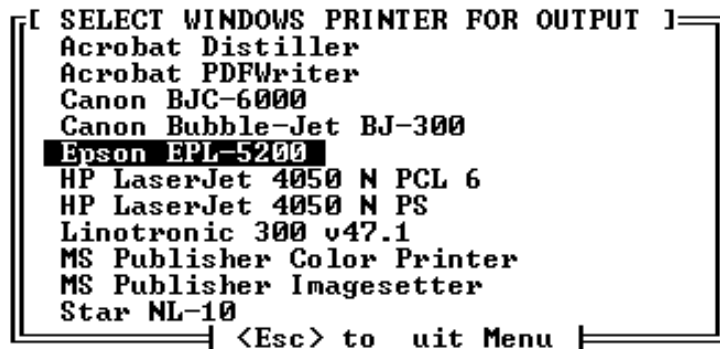


Figure 6.1

You may note from Figure 6.1 that it is even possible to select to make the output into the form of a PDF file (of course, you need Adobe Acrobat for 'Acrobat PDFWriter' to be on the menu).

For the "Luminaire Library manager...", "Exterior lighting design..." and "Zebra crossing lighting design" modules (see Figure 2.1), the selection of a printer, different from the default as set in the "Program setup" module, is made within the module as previously.

In any of the situations above there are two types of printouts that can be generated in the Perfect Lite modules, they can contain either text or graphics.

6.1. Text Output

Text output is simply where there is only numbers and letters printed on the page (eg. list of luminaires in the library).

When you select to print text, the message, like Figure 6.2, may be seen on the screen as Perfect Lite passes the details to be printed to the Print Manager.

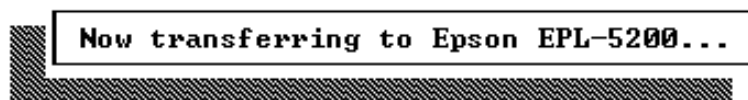


Figure 6.2

Shortly after the message disappears the nominated printer should start printing the required output. The program would then continue on as normal.

6.2. Graphics Output

Graphics output is where there is some text but also there are lines, circles, shapes etc. (eg. Iso contour diagram).

When you select to print graphics, a window like, Figure 6.3, will be seen on the lower part of the screen as Perfect Lite (in fact PrintGL) processes the output and passes it to the Print Manager.

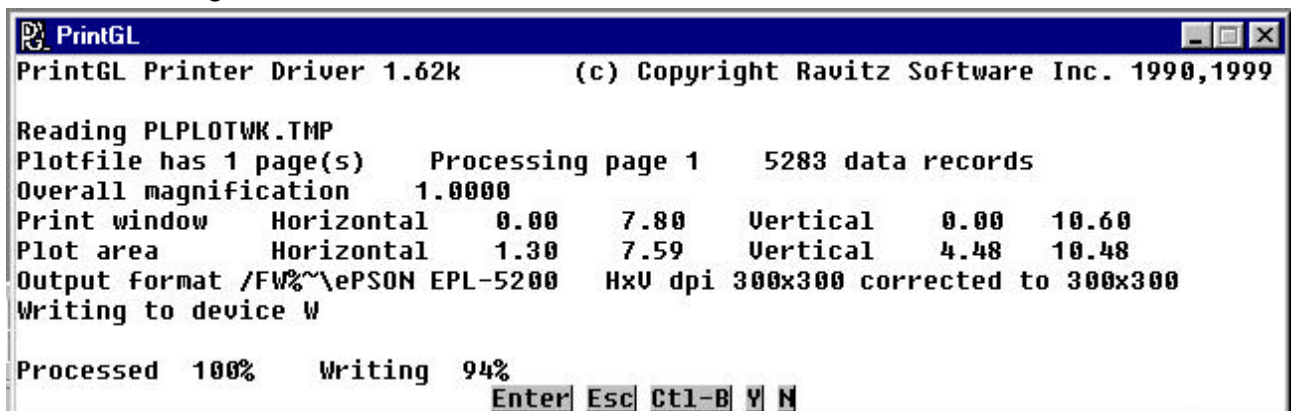


Figure 6.3

Shortly after the bottom line in this window reads "Processed 100% Written 100%", the PrintGL window should close and the nominated printer should commence printing. If you are printing to a laser printer, it might be a further 10 to 20 seconds before the print emerges. See the next section if it appears as though Perfect Lite has then disappeared from the screen.

6.3. Running Full Screen

If you run Perfect Lite full screen the window as in Figure 6.3 will not be readily visible and you may think the program has 'locked up', as nothing immediately appears to be happening either on the screen or on the printer. Also, just prior to the processing in Figure 6.3, Perfect Lite may have been minimised and once again your immediate thought may be that the program has 'crashed'. However, if you look closely, you will see Perfect Lite minimised on the bottom of the screen on the Windows taskbar. You would then just click on the button icon to return the program to full screen and continue.