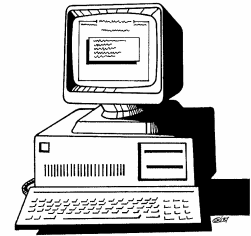


# V Category Lighting



## PROGRAM FEATURES (Version 5.02)

- Maintains on disk a Library of luminaire photometric data (data being obtained directly from individual manufacturers)
- Creates correctly formatted input file for the 'SAASTAN.EXE' program following on screen input of data relating to the lighting installation
- Appends to the input file the photometric I-table data for the luminaire selected from the Library or input directly from an I-table file
- Automatically executes the SAASTAN program
- Calculates the corresponding Upward Waste Light Ratio for the upcast of the luminaire
- Produces a summary listing with the Code compliance given or where the compliance is not attained
- Uses Light Technical Parameters from AS/NZS 1158.1.1-2005
- Incorporates different calculation methods & observer positions for Australia & New Zealand
- All results can be output to your printer or saved in a text file
- Simple process to re-run when only a minor change to installation data is required
- Incorporates curve spacing adjustments
- Performs calculations for a range of spacings and produces a table of compliance
- Context sensitive Help at virtually all points throughout the program
- Road surface reflectance table library contains CIE standard surfaces R0 to R4, N1 to N4, W1 to W4 and New Zealand R2 and N4
- Comprehensive user manual - much of which can now be accessed in the program from the many pop-up Help screens
- Program is included at no extra charge with the main **Perfect Lite software package**
- Full back-up and support **in Australia**
- Your company name can be input into the program for display on all output
- Able to view/print the I-table as on file or with azimuth/elevation angles shown
- Able to view/print the R-table as on file
- A true 32 bit Windows application

## COMPUTER SYSTEM REQUIREMENTS

- IBM or compatible PC running Windows 95, 98, NT, 2000, XP or Vista
- CD-ROM drive
- Minimum requirements of 640Kb of conventional RAM
- Printer for hard copy output
- Requires SAASTAN.EXE program supplied with AS1158.2-2005
- Internet connection required to register the software

For further information please contact:

**TREVOR CASWELL SOFTWARE**

**P.O. Box 236**

**SALISBURY 4107**

**AUSTRALIA**

**Ph. / Fax.: (07) 3275 2406**

**Email: [info@perfectlite.com](mailto:info@perfectlite.com)**

**PERFECT LITE - V Category Lighting - AS/NZS 1158.1.1-2005**

I-Table File Name: LUM3.CIE  
 Initial Lamp Flux: 27 Klms Maintenance Factor: 0.7 Upcast Angle: 5 °  
 Luminaire Description: Category V Light  
 Lamp Wattage and Type: S250 Clear Lamp Light Source: HPS  
 Stores Code: UWLR: 1.53

Job Name:

Lighting Category:  Road Surface:

Arrangement No.:  Dimensions are in metres

Mounting Height:

Luminaire Spacing:  upto:  in increments of:

Carriageway Width:

Median Width:  (Not applicable for Single Carriageway)

Overhang - 1st Row:  2nd Row:  (Not applicable for Arrangements 1, 2, 5 or 6)

Carriageway Traffic Flow:  One Way  Two Way

## Australia Mode

Input fields to be filled to produce a spacing table.

**PERFECT LITE - V Category Lighting - AS/NZS 1158.1.1-2005**

Your Company Name Goes Here  
 \*\*\*\*\*

Results for SAASTAN runs with varying Spacings

Job name: Single Carriageway

Luminaire file name: LUM3.CIE  
 Luminaire Description: Category V Light  
 Lamp Wattage & Type: S250 Clear Lamp  
 Lighting category: V3 Luminous flux: 27 Klms  
 Upcast angle: 5 Degrees Arrangement: 1 Single-Left  
 Mounting height: 10.5 m Carriageway width: 14 m  
 Maintenance factor: 0.7  
 Overhang 1st row: 3 m  
 Traffic Flow: One Way ---->

Spacing (m)	Traffic Direction or	AV-L (>=0.75) or (>=0.83)	UO (>=0.33) or (>=0.31)	UL (>=0.5) "	UWLR (<=3) "	TI (<=20) "	ESL (>=50) "	ESR (>=50) "	Comply with V3
35.00	Normal	1.30	0.33	0.81	1.53	13.87	79.05	69.73	YES
40.00	Normal	1.15	0.32	0.74	1.53	14.80	80.70	69.16	YES
45.00	Normal	1.01	0.31	0.68	1.53	15.95	81.31	69.87	YES
50.00	Normal	.91	0.30	0.58	1.53	17.13	81.05	70.13	NO
55.00	Normal	.83	0.31	0.56	1.53	17.88	81.06	70.14	YES
60.00	Normal	.76	0.30	0.47	1.53	18.97	81.06	70.14	NO
65.00	Normal	.70	0.29	0.42	1.53	20.02	81.05	70.13	NO

[ 1 page, if printed ]

Resulting spacing table display in a scrollable window. Results can also be printed.