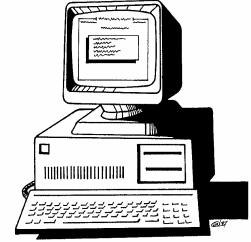


# P Category Lighting



## PROGRAM FEATURES (Version 3.03)

- Accepts photometric I-table data directly from disk in the standard CIE/SAASTAN format
- Installation parameters such as mounting height, arrangement, upcast angle, offset distance etc. can all be easily varied to suit your application
- Results can be selectively produced for lighting categories P1 to P8 for Local Roads and Pathways(Cycleways)
- Produces a tabulated result of calculated Light Technical Parameters with maximum spacings shown
- Tabular display can be output to a printer or saved to a file
- Context sensitive Help available at virtually all points in the program
- Calculations performed and displayed in accordance with **AS/NZS 1158.3.1-2005**
- Your company name can be input into the program for display on all output
- Able to view/print the I-table as on file or with azimuth/elevation angles shown
- Able to calculate the Upward Waste Light Ratio
- Program is included at no extra charge with the main **Perfect Lite software package**
- Full back-up and support **in Australia**
- A true 32 bit Windows application

## COMPUTER SYSTEM REQUIREMENTS

- IBM or compatible PC running Windows 95, 98, NT, 2000, XP or Vista
- CD-ROM drive
- Minimum requirements of 512Kb of conventional RAM
- SVGA graphics adapter with colour monitor
- inkjet or laser printer (for hard copy output only)
- Software registered & activated via email

For further information please contact:

**TREVOR CASWELL SOFTWARE**

**P.O. Box 236**

**SALISBURY 4107**

**AUSTRALIA**

**Ph. / Fax.: (07) 3275 2406**

**Email: [info@perfectlite.com](mailto:info@perfectlite.com)**

Perfect Lite - P Category Lighting - AS/NZS 1158.3.1:2005

File View Spacing Table Tools Help

I-Table File Name: C:\SourceCode\PlePcat\LUM2.CIE  
 Initial Lamp Flux: 3800 lms Maintenance Factor: 0.7 Upcast Angle: 5°  
 Luminaire Description: Sample Minor Road Luminaire  
 Lamp Wattage and Type: 80 Watt Mercury Vapour Light Source: MV  
 Stores Code:

**LOCAL AREA ROADS**

Job Name: Result Validation - Appendix B of AS/NZS 1158.2

Lighting Category: P4

User Defined LTPs:  ---> Eav: .85 lx Eph: .14 lx Up: 10

Arrangement: Single Sided

Offset Distance: \* m [\* = 1/4 Road Reserve; & = 1/2 Road Reserve]

Mounting Height Range: 6.5 m to: 7.5 m in increments of: 1 m

Road Reserve Range: 8 m to: 28 m in increments of: 2 m

List LTP's for each maximum spacing  Show Illuminance values over grid

Cancel Calculate

Input fields to be filled to produce a spacing table.

Perfect Lite - P Category Lighting - AS/NZS 1158.3.1:2005

Lighting Category: P4 \*\*\* User Defined LTPs as below \*\*\*

Illuminance Criteria: Minimum Illuminance (Eph) >= 0.14 lux  
 (Maintained values) Average Illuminance (Eav) >= 0.85 lux  
 Illuminance Uniformity (Up) <= 10

Calculation Grid: 20 x 11 points - Figure 3.7 of AS/NZS 1158.2

Mounting Height	Maximum Spacing for different Road Reserve Widths										
	8.0	10.0	12.0	14.0	16.0	18.0	20.0	22.0	24.0	26.0	28.0
6.5	49.8	49.1	48.4	47.6	46.9	46.2	42.7	38.3	34.5	29.7	21.6
7.5	53.9	53.3	52.6	51.8	51.0	50.3	49.3	45.3	40.7	36.7	30.9

Value/s in above table are all in metres.  
 The table contains maximum spacings which, for the specified luminaire and lamp combination, provide compliance with the user defined light technical parameters (LTPs) nominated above.

Refer next page for list of LTP's at compliant maximum spacings.

Refer following page/s for illuminance values at grid points.

[ 24 pages, if printed ] Save As... Print Close

Resulting spacing table display in a scrollable window. Results can also be printed.