

Perfect Lite I-Table Conversion

IESNA to CIE/SAASTAN



COPYRIGHT NOTICE

© Trevor Caswell 1990-2012 All rights reserved

Copyright exists on the contents of this User Guide and the software '**Plel2C.exe**' supplied on the accompanying electronic media. You agree by purchasing the software to use it on only one machine. However, it may be transferred and used on another machine, but shall under no circumstances be used on more than one machine at a time. One copy can be made of the software into any machine readable form for backup purposes only in support of your use of the software on a single machine.

DISCLAIMER OF WARRANTY

The software and User Guide are sold *AS IS* and without warranty as to performance. Because of the use to which this software may be put, and the variety of luminaire I-tables and hardware used in conjunction with it, no warranty of fitness for a particular purpose is offered. Whilst the developer has invested considerable time and effort to create a high quality product, the user must assume the risk of using this software.

Trevor Caswell Software
P.O. Box 236
SALISBURY, Qld 4107
Australia
Email: support@perfectlite.com
Web: www.perfectlite.com

TABLE OF CONTENTS

Chapter	Page
1. INTRODUCTION	2
2. INSTALLING THE SOFTWARE.....	2
3. STARTING THE SOFTWARE	3
4. BRIEF TOUR OF THE SOFTWARE.....	4

1. INTRODUCTION

The **PLEI2C** conversion software easily transform photometric I-table files in the American IESNA format to the CIE/SAASTAN format. This latter format is specified as the only acceptable format for use with the AS/NZS1158 series of Standards for road lighting.

It is assumed that the user has basic knowledge of the operations of the PC and the Windows XP or Windows 7 operating systems.

Before reading any further, briefly look through this User Guide and you will notice that screen snapshots have been used quite regularly. This has been done to make it easier for you to equate the User Guide with the operation of the software. The example used in the snapshots utilizes the sample photometric data supplied in the file named **SAMPLE.CIE**.

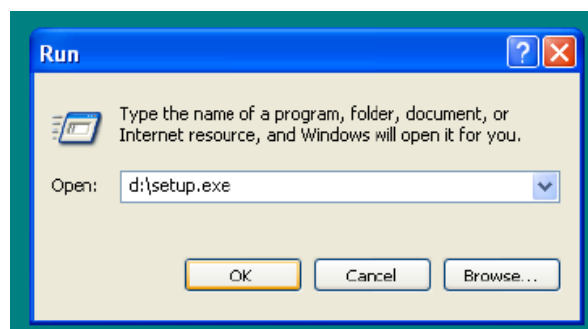
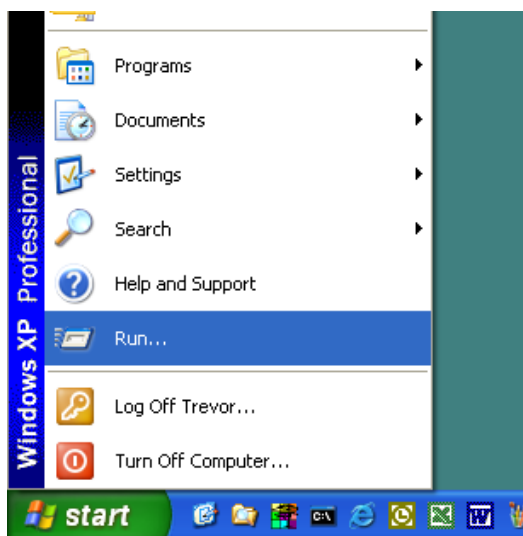
2. INSTALLING THE SOFTWARE

The software can be provided in one of two ways:-

1. On CD-ROM

This way will require a short procedure to install the software correctly. Generally, when you put the CD-ROM in your CD drive the Setup program should start automatically after a short time. If not, then carry out the procedure as described below.

Click on the **Start** button, Select **Run...** from the menu and type **d:\setup.exe** (where **d:** is the drive letter of your CD-ROM) into the Run dialog box and then click **OK**.



Follow the subsequent instructions on the screen to correctly install the PleI2C software on your computer. Generally, it will only be necessary to click on the **Next** button several times to carry out the installation.

1. Via Email or Download from the website

Instructions will be provided in the email or on the website on the procedure to install the software in this case.

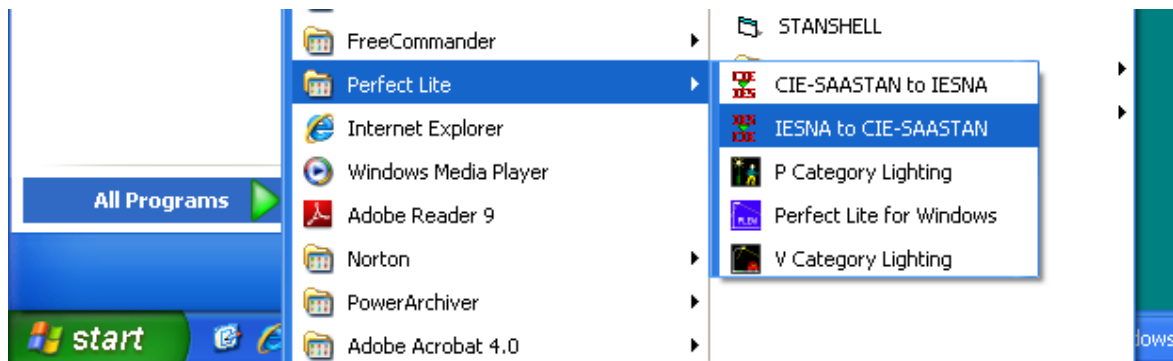
It is recommended you choose the default folder eg. **c:\Program Files\Perfect Lite\IESNA to CIE/SAASTAN** (or c:\Program Files (x86)\Perfect Lite\IESNA to CIE/SAASTAN for 64bit operating systems) in which to install the software. If you install it in another drive and/or folder then please make a note of the location below.

PLEI2C software installed in:

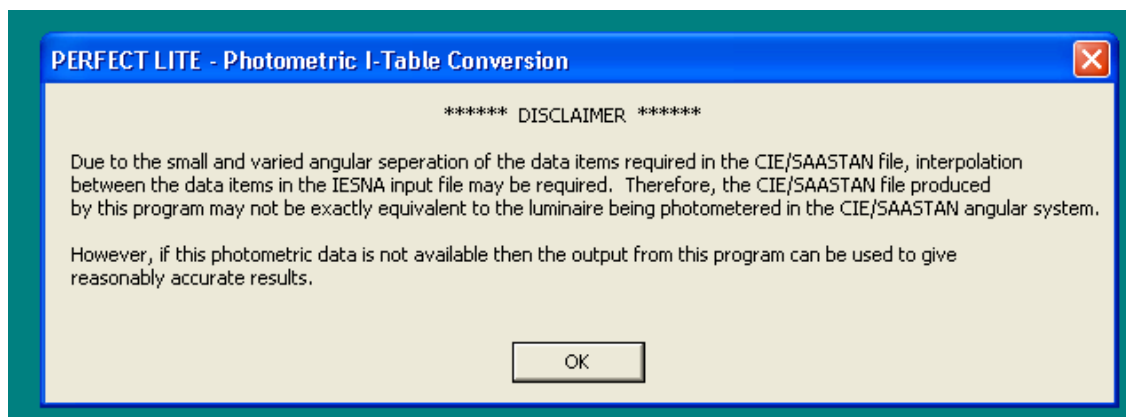
.....

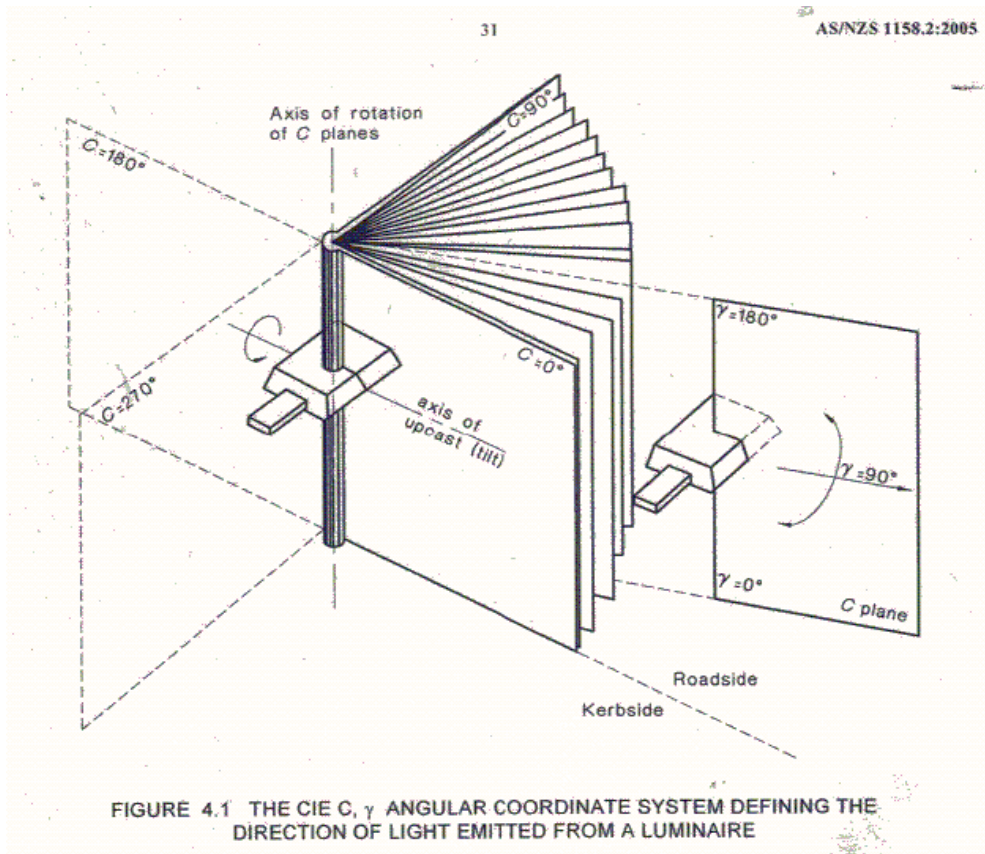
3. STARTING THE SOFTWARE

Once installed, click on the **Start** button, select **Programs** then **Perfect Lite** then **IESNA to CIE/SAASTAN** from the menu.

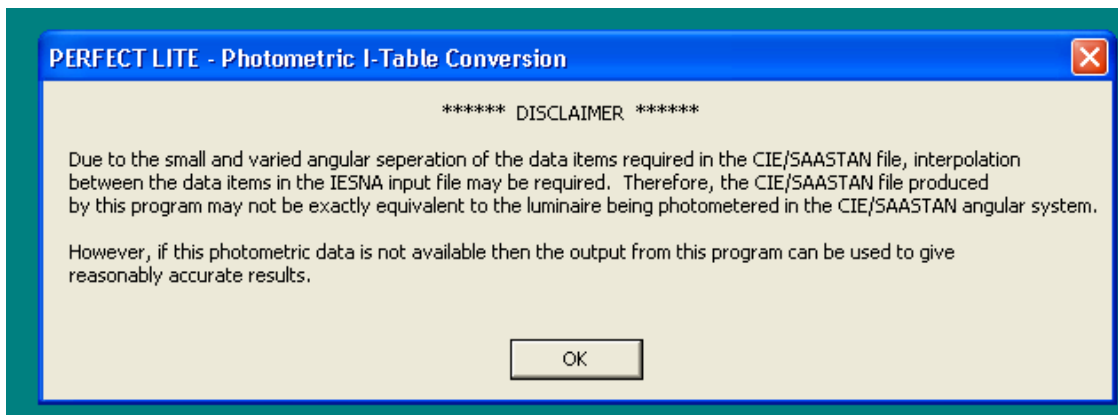


The window as shown below should be displayed from where you can continue to operate the software. If you are unfamiliar with the software then it is suggested you undertake the 'Brief tour' of the software as described in the next section of this User Guide.

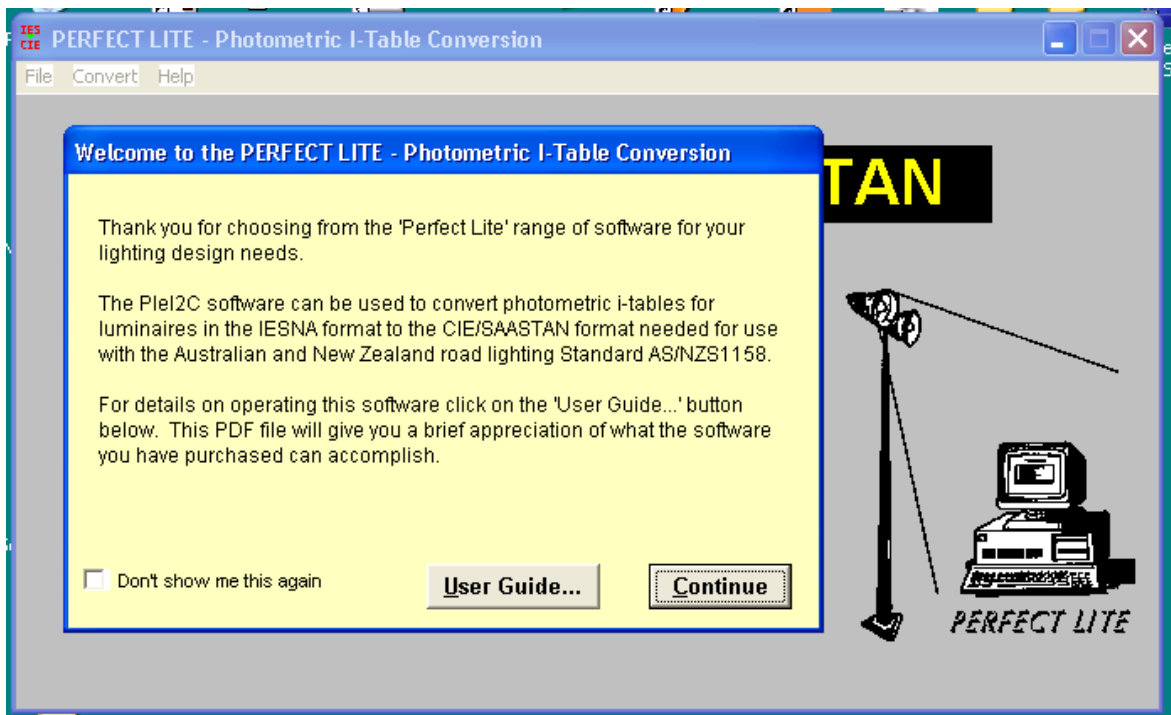




When the program starts a Disclaimer message will appear as shown below. This is just a short reminder of the limitations of the data converted by this software.



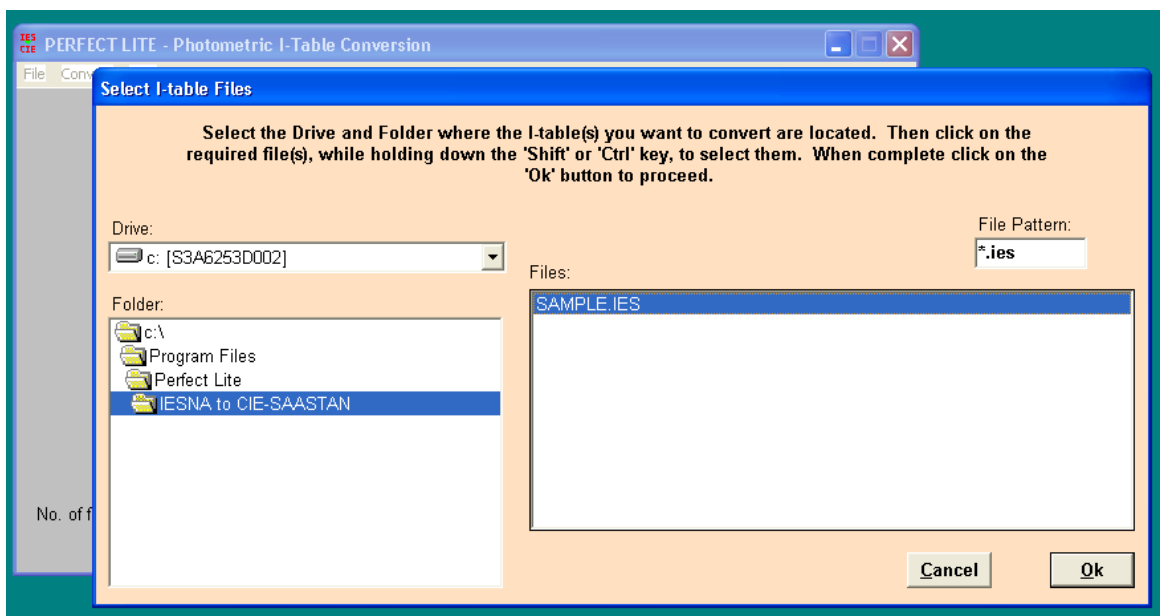
Click the **Ok** button to proceed on with the software, the Welcome screen will then appear.



On this screen you can:-

1. Click on the 'tick' box to the left of the **Don't show me this again** so this Welcome screen will not appear next time you run the software.
2. Click on the **User Guide...** button which will bring up this document.
3. Click on the **Continue** button which will go onto the next stage of the software.

With selection 3, a dialog box will then appear where you select one or more I-table files to convert.

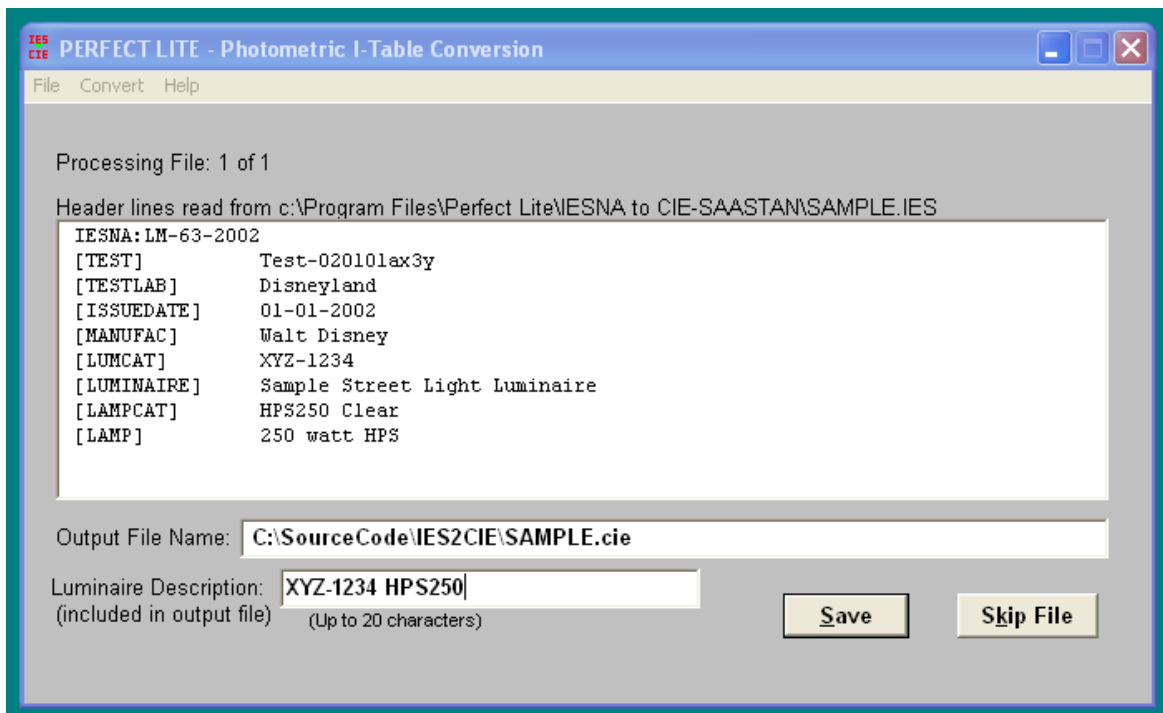


If necessary, click on the **Drive:** and/or **Folder:** areas to move to the location of the required files. By default, the program will display the drive and folder from where the program is started or where you last located files. The **File Pattern:** box can be changed to display only files matching a certain type eg. default type is *.ies which is the normal file extension for IESNA formatted I-table data.

In the **Files:** area you can select one or more files by clicking on the respective name with the mouse cursor. If more than one file is required then you will also have to hold down either the **Shift** or **Ctrl** key on the keyboard. Using the **Shift** key will select a range of files and the **Ctrl** key will select individual files one at a time.

If you just want to select one file then you can simply double-click on the required file to proceed otherwise you will have to click the **OK** button to continue the program.

The program will then process the selected files one at a time. The screen below will appear for each file. This screen is used to nominate the Luminaire Description and the name of the file where the converted data is to be saved.

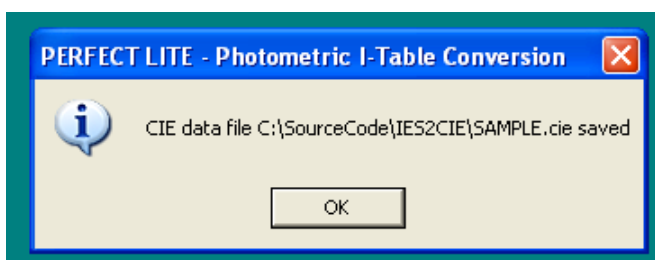


The top section of the window displays the header lines read from the nominated file. These can be used to fill in the **Luminaire Description** field further down the screen. The descriptive information in the IESNA file can be quite lengthy but as you can see the CIE/SAASTAN format only allows a maximum of 20 characters.

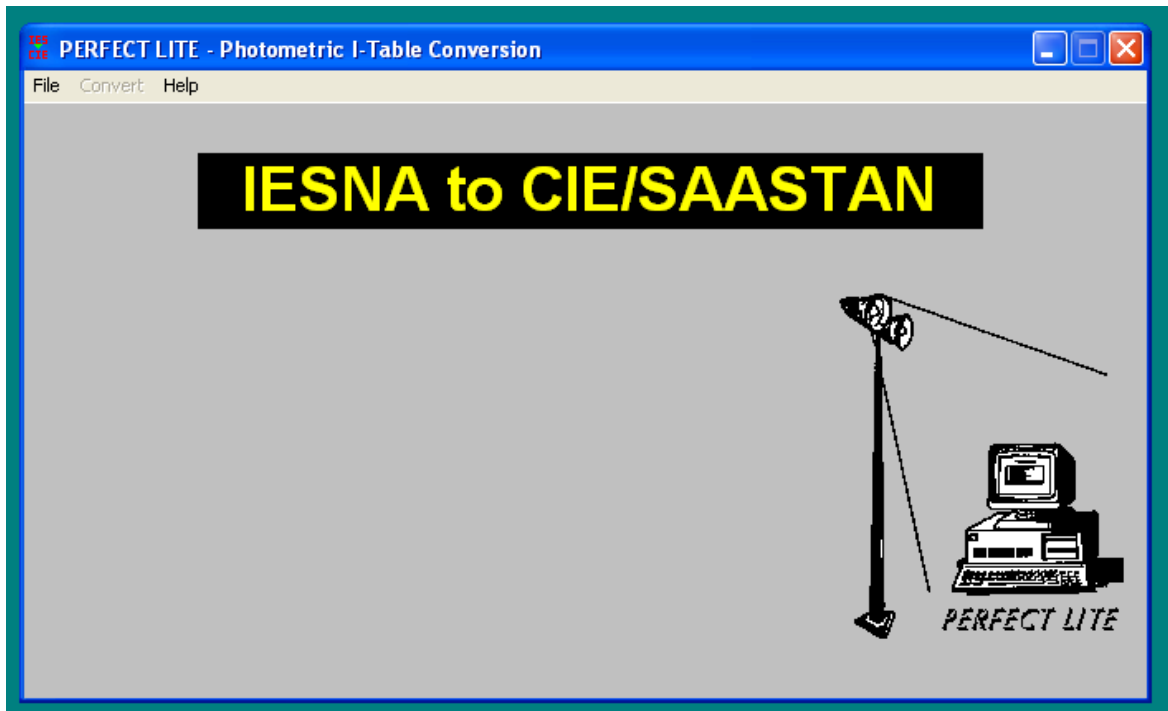
By default, the **Output File Name** will be the same name and location as the input file but with a file extension of **.cie**, this being the usual one for CIE/SAASTAN files. Of course, you can change the file name and location, if you want. If you change the location (folder name) then this name will be remembered for subsequent files.

When you have completed the **Output File Name** and **Luminaire Description** fields click on the **Save** button for the actual conversion process to be completed. Should an error be encountered then an appropriate message will be displayed, respond as necessary to eliminate the error. Alternatively, if you do not want to convert the current file then click on the **Skip File** button.

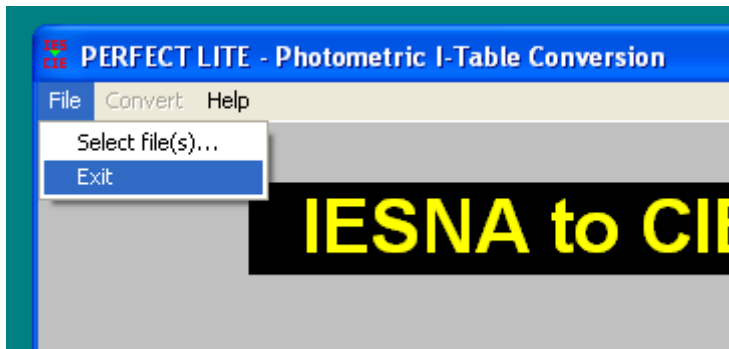
If the conversion is successful a message similar to that below will be displayed.



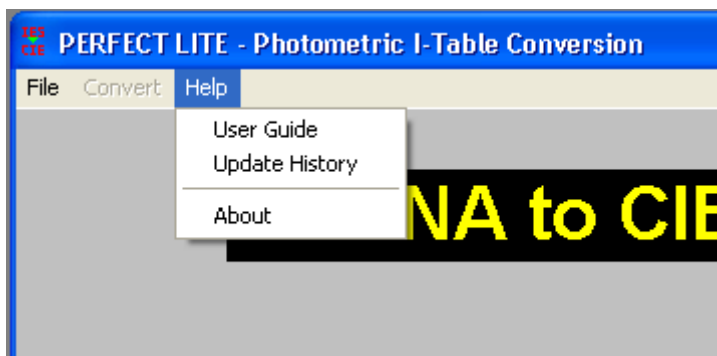
In this case click the **Ok** button to proceed onto the next file. When you have completed all the files to be converted the screen will return to that shown below.



From here you can select from the **File** menu to **Exit** the software or select more files to convert.



Alternatively, you can view the **Update History** or find out **About** the version number of the software and contact details for the developer.



Well that's about all there is to the software.

Should you encounter any problems using this software or would like to offer suggestions on future enhancements then please send an email to support@perfectlite.com

Trevor Caswell
April 2012
support@perfectlite.com