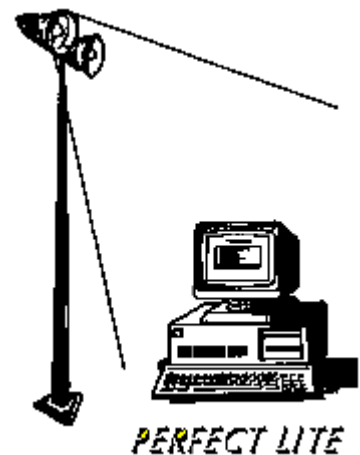


Perfect Lite I-Table Conversion

CIE/SAASTAN to IESNA



COPYRIGHT NOTICE

© Trevor Caswell 1990-2012 All rights reserved

Copyright exists on the contents of this User Guide and the software '**PleC21.exe**' supplied on the accompanying electronic media. You agree by purchasing the software to use it on only one machine. However, it may be transferred and used on another machine, but shall under no circumstances be used on more than one machine at a time. One copy can be made of the software into any machine readable form for backup purposes only in support of your use of the software on a single machine.

DISCLAIMER OF WARRANTY

The software and User Guide are sold *AS IS* and without warranty as to performance. Because of the use to which this software may be put, and the variety of luminaire I-tables and hardware used in conjunction with it, no warranty of fitness for a particular purpose is offered. Whilst the developer has invested considerable time and effort to create a high quality product, the user must assume the risk of using this software.

Trevor Caswell Software
P.O. Box 236
SALISBURY, Qld 4107
Australia
Email: support@perfectlite.com
Web: www.perfectlite.com

TABLE OF CONTENTS

Chapter	Page
1. INTRODUCTION	2
2. INSTALLING THE SOFTWARE.....	2
3. STARTING THE SOFTWARE	3
4. BRIEF TOUR OF THE SOFTWARE.....	4

1. INTRODUCTION

The **PLEC2I** conversion software easily transform photometric I-table files in the CIE/SAASTAN format to the American IESNA format. This latter format is used more commonly for illuminance calculations in software such as AGI32.

It is assumed that the user has basic knowledge of the operations of the PC and the Windows XP or Windows 7 operating system.

Before reading any further, briefly look through this User Guide and you will notice that screen snapshots have been used quite regularly. This has been done to make it easier for you to equate the User Guide with the operation of the software. The example used in the snapshots utilizes the sample photometric data supplied in the file named **SAMPLE.CIE**.

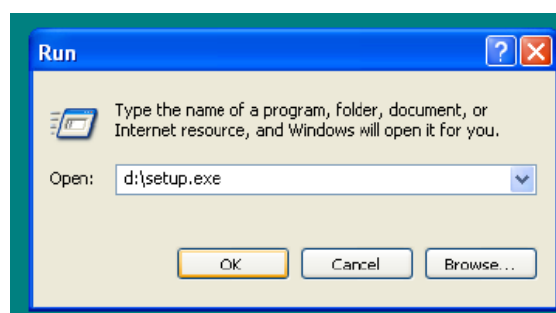
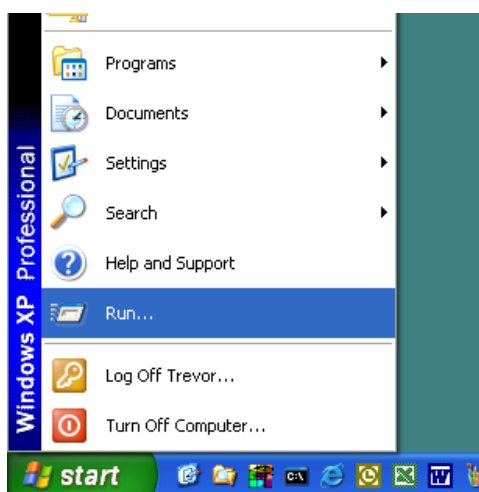
2. INSTALLING THE SOFTWARE

The software can be provided in one of two ways:-

1. On CD-ROM

This way will require a short procedure to install the software correctly. Generally, when you put the CD-ROM in your CD drive the Setup program should start automatically after a short time. If not, then carry out the procedure as described below.

Click on the **Start** button, Select **Run...** from the menu and type **d:\setup.exe** (where **d:** is the drive letter of your CD-ROM) into the Run dialog box and then click **OK**.



Follow the subsequent instructions on the screen to correctly install the PleC2I software on your computer. Generally, it will only be necessary to click on the **Next** button several times to carry out the installation.

2. Via Email or Download from the website

Instructions will be provided in the email or on the website on the procedure to install the software in this case.

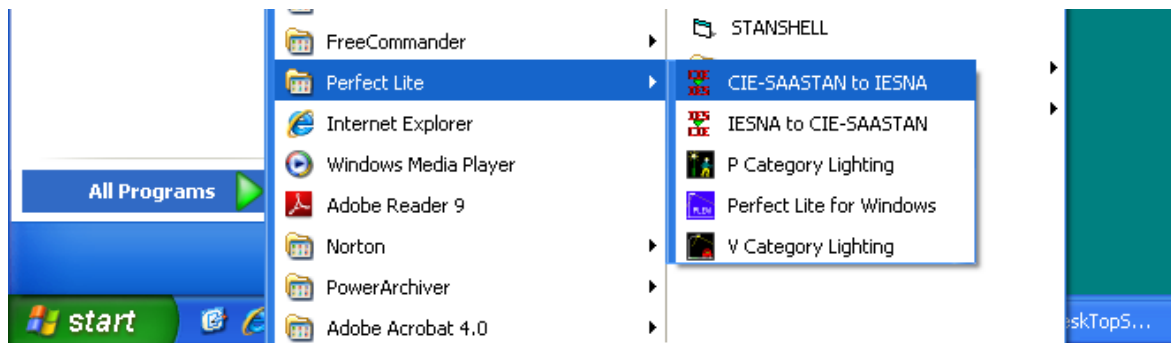
It is recommended you choose the default folder eg. **c:\Program Files\Perfect Lite\CIE/SAASTAN to IESNA** (or c:\Program Files (x86)\Perfect Lite\CIE/SAASTAN to IESNA for 64bit operating systems) in which to install the software. If you install it in another drive and/or folder then please make a note of the location below.

PLEC2I software installed in:

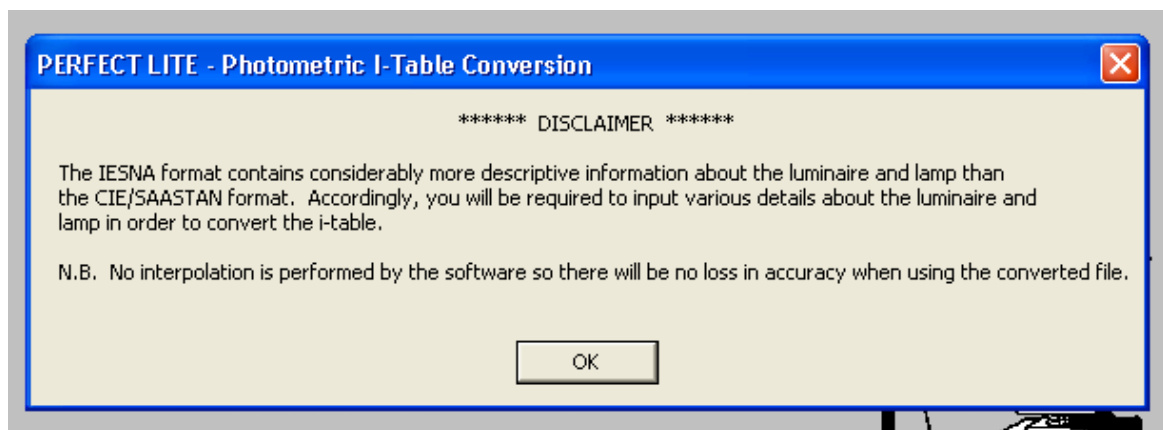
.....

3. STARTING THE SOFTWARE

Once installed, click on the **Start** button, select **Programs** then **Perfect Lite** then **CIE/SAASTAN to IESNA** from the menu.



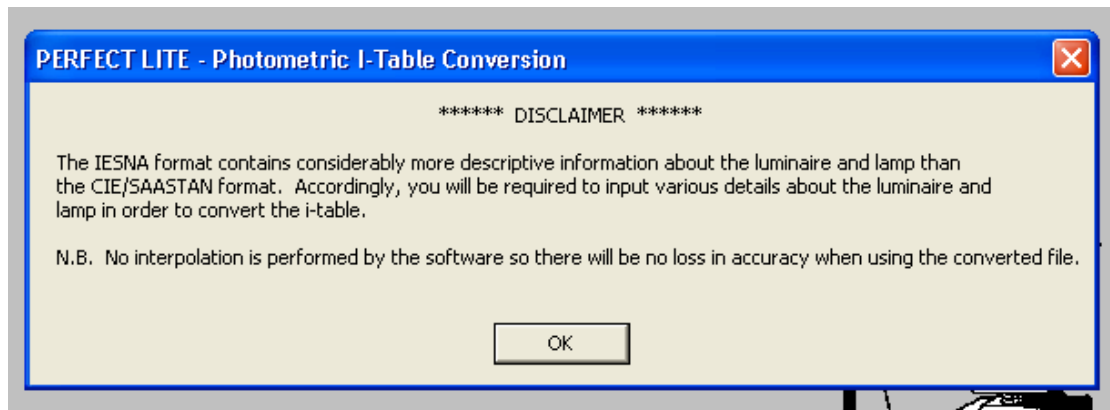
The window as shown below should be displayed from where you can continue to operate the software. If you are unfamiliar with the software then it is suggested you undertake the 'Brief tour' of the software as described in the next section of this User Guide.



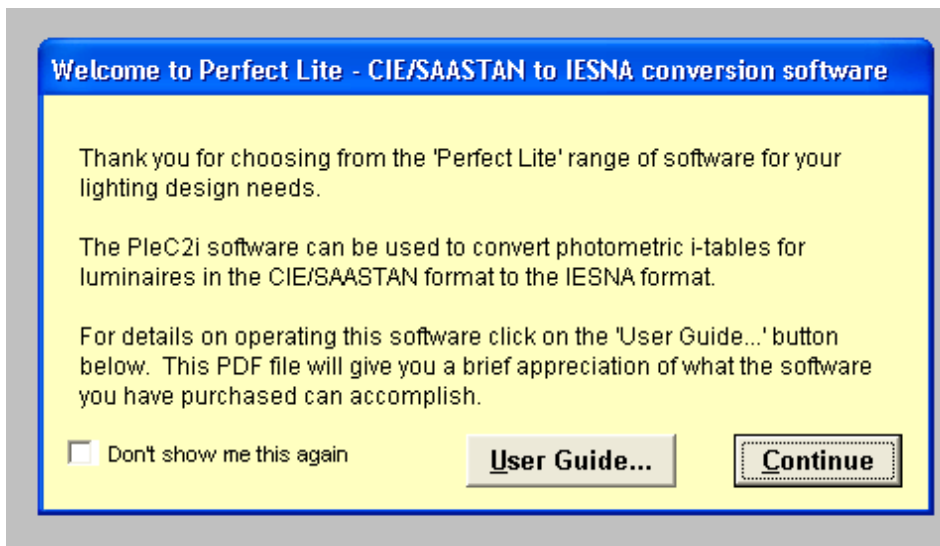

```

[LAMPCAT] HPS250 Clear
[LAMP] 250 watt HPS
TILT=NONE
1      827      1      20      13      1      2      0.160  0.250  0.065
1      1      39.53
0      5      15      25      35      45      55      65      75      85      95      105
115    125    135    145    155    165    175    180
0      30      60      90      120    150    180    210    240    270    300    330    360
346    364    340    269    187    116    69      37      13      3      0      0
0      0      0      0      0      0      0      0
346    355    324    264    186    120    75      48      33      21      0      0
0      0      0      0      0      0      0
346    348    310    239    173    128    99      78      65      48      0      0
0      0      0      0      0      0      0
346    333    278    207    152    121    101     86      73      58      0      0
0      0      0      0      0      0      0
346    326    259    199    154    127    110     94      83      65      0      0
0      0      0      0      0      0      0
346    322    247    183    142    117    97      82      69      56      0      0
0      0      0      0      0      0      0
346    317    245    179    140    113    90      71      55      37      0      0
0      0      0      0      0      0      0
346    318    246    183    141    114    96      81      69      54      0      0
0      0      0      0      0      0      0
346    329    260    191    145    119    106     98      87      69      0      0
0      0      0      0      0      0      0
346    343    289    218    172    143    127     112     94      74      0      0
0      0      0      0      0      0      0
346    351    316    247    189    149    126     111     92      69      0      0
0      0      0      0      0      0      0
346    358    329    257    182    121    79      54      38      23      0      0
0      0      0      0      0      0      0
346    364    340    269    187    116    69      37      13      3      0      0
0      0      0      0      0      0      0
    
```

When the program starts a Disclaimer message will appear as shown below. This is just a short reminder of the limitations of the data converted by this software.



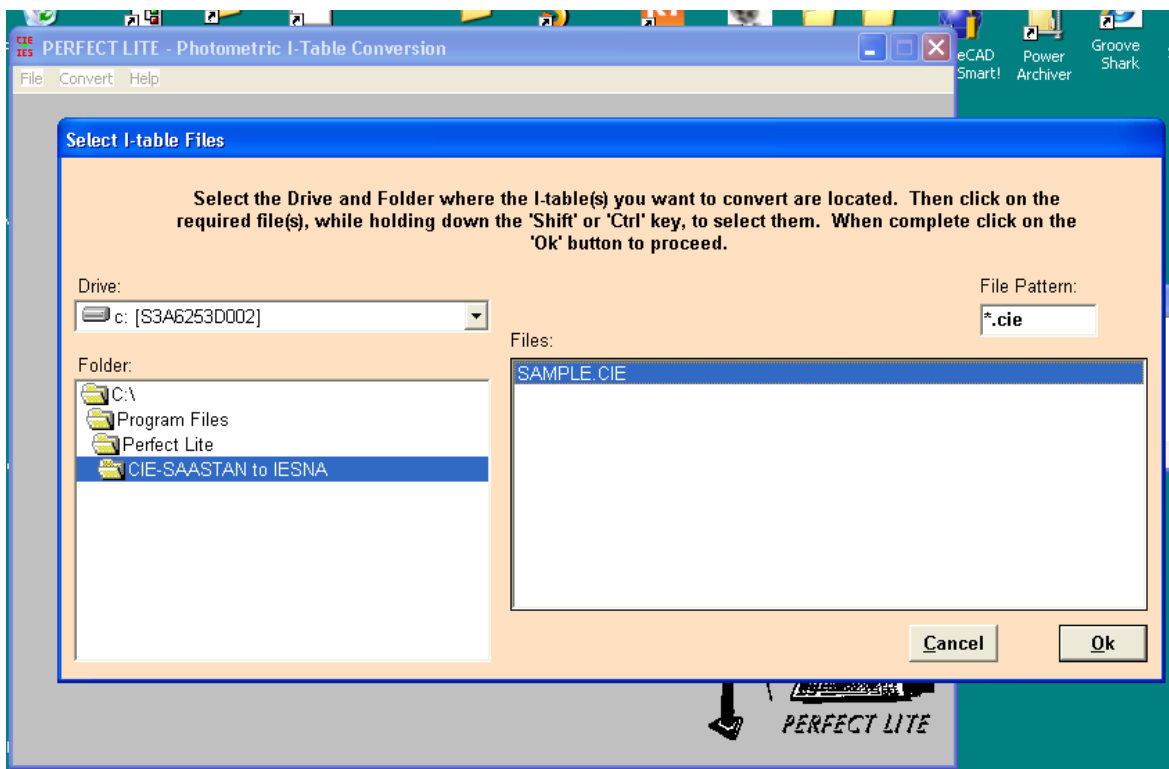
Click the **Ok** button to proceed with the software, the Welcome screen will then appear.



On this screen you can:-

1. Click on the 'tick' box to the left of the **Don't show me this again** so this Welcome screen will not appear next time you run the software.
2. Click on the **User Guide...** button which will bring up the document you are currently viewing.
3. Click on the **Continue** button which will go onto the next stage of the software.

With the third, a dialog box will then appear where you select one or more I-table files to convert.



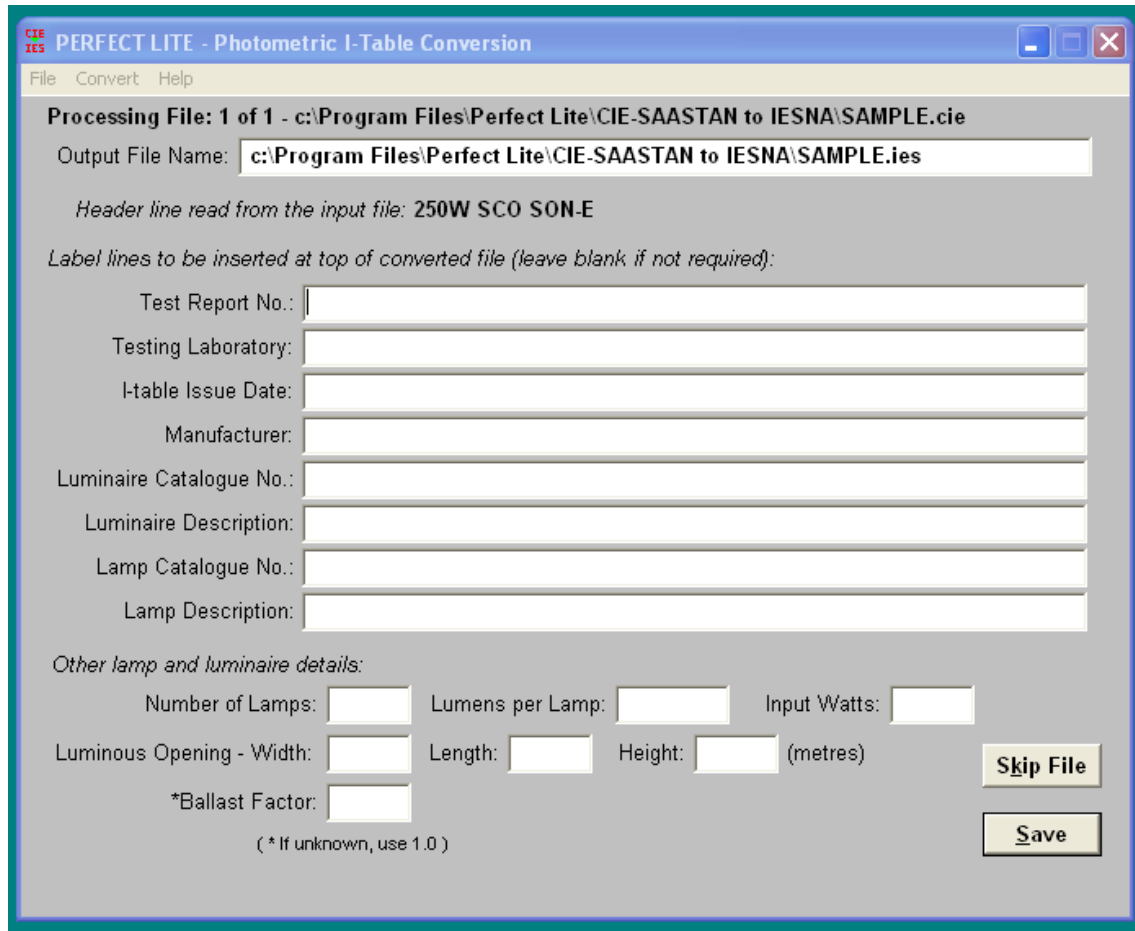
If necessary, click on the **Drive:** and/or **Folder:** areas to move to the location of the required files. By default, the program will display the drive and folder from where the program is started or where you last located files. The **File Pattern:** box can be changed to display only files matching a certain type (eg. default type is *.cie which is the normal file extension for CIE/SAASTAN formatted I-table data).

In the **Files:** area you can select one or more files by clicking on the respective name with the mouse cursor. If more than one file is required then you will also have to hold down either the

Shift or **Ctrl** key on the keyboard. Using the Shift key will select a range of files and the Ctrl key will select individual files.

If you just want to select one file then you can simply double-click on the file to proceed otherwise you will have to click on the **OK** button to continue the program.

The program will then process the selected files one at a time. The screen below will appear for each file where you nominate various items required in the IESNA file. As mentioned before, the CIE/SAASTAN format does not contain a lot of descriptive information about the luminaire. Hence, many of the fields will be blank and will require you to complete them before the program can continue..

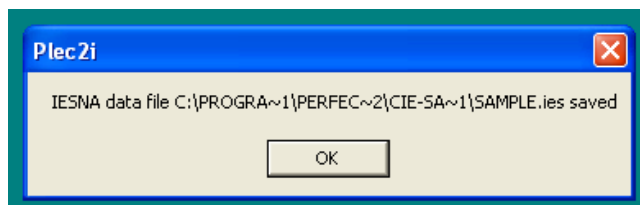


The top section of the window displays the header line read from the nominated file.

By default, the **Output File Name** will be the same name and location as the input file but with a file extension of **.ies**, this being the usual one for IESNA files. Of course, you can change the file name and location etc.. If you change the location (folder name) then this name will be remembered for subsequent files.

When you have completed the **Output File Name** and **Luminaire Description** fields click on the **Save** button for the actual conversion process to be completed. Should an error be encountered then an appropriate message will be displayed, respond as necessary to eliminate the error. Alternatively, if you do not want to convert the current file then click on the **Skip File** button.

If the conversion is successful a message similar to that below will be displayed.



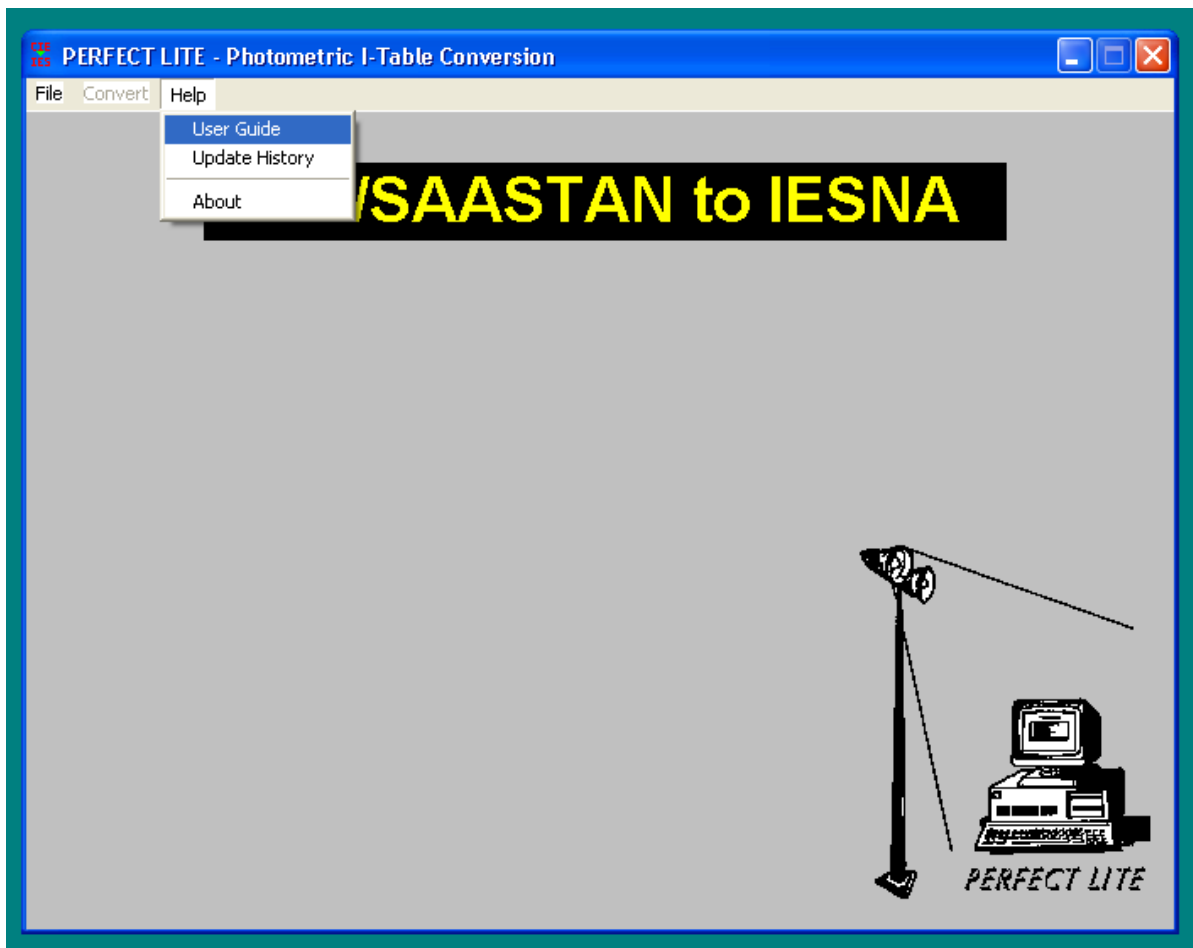
Click the **Ok** button to proceed onto the next file. When you have completed all the files to be converted the screen will return to that shown below.



From here you can select from the **File** menu to **Exit** the software or select more files to convert.



Alternatively, you can view the **User Guide**, **Update History** or find out **About** the version number of the software and contact details for the developer from the **Help** menu.



Well that's about all there is to the software.

Trevor Caswell
April 2012
support@perfectlite.com