

PROCEDURE TO INPUT I-TABLE DATA INTO THE PERFECT LITE LIBRARY

The Perfect Lite (DOS) Illuminance software photometric i-table Library can store both CIE/SAASTAN and IESNA formatted data. Below is a part sample of the respective two formats:-

IESNA Format (typical format for flood lights, interior luminaires & street lights)

```

IESNA:LM-63-2002
[TEST] Test Luminaire
[TESTLAB] Xcel Photo Lab
[ISSUE DATE] 01-01-2004
[MANUFAC] U-Beaut Lighting Company
[LUMCAT] SLPE-4567
[LUMINAIRE] Sample Street Light Luminaire
[LAMP CAT] HPS250 Clear
[LAMP] 250 watt HPS
TILT=NONE
1      827      1      20      13      1      2      0.160  0.250  0.065
1      1      39.53
0      5      15      25      35      45      55      65      75      85      95      105
115    125    135    145    155    165    175    180
0      30      60      90      120    150    180    210    240    270    300    330
360
346    364    340    269    187    116    69     37     13     3     0     0
0      0      0      0      0      0      0      0      0      0      0      0
346    355    324    264    186    120    75     48     33     21     0     0
0      0      0      0      0      0      0      0      0      0      0      0
346    348    310    239    173    128    99     78     65     48     0     0
0      0      0      0      0      0      0      0      0      0      0      0
346    333    278    207    152    121    101    86     73     58     0     0
0      0      0      0      0      0      0      0      0      0      0      0
346    326    259    199    154    127    110    94     83     65     0     0
0      0      0      0      0      0      0      0      0      0      0      0

```

CIE/SAASTAN Format (typical format for street lights)

```

1      1      0      XYZ-1234 HPS250
189 189 189 189 189 189 189 189 189 189 189 189 189 189 189 189 189 189 189
189 189 189 189 189 189 189 189 189 189 185 186 189 190 190 188 187
188 190 189 188 187 187 191 190 190 190 188 186 185 184 182 178 177
174 170 165 163 167 172 177 179 180 186 191 194 198 203 206 201
207 208 208 205 200 194 186 179 172 166 157 145 135 121 136 152 161
166 168 172 180 188 202 215 224 233 238 237 233 225 215 205 192 177
167 160 153 141 126 113 95 113 135 140 142 145 152 165 179 197 215
233 243 248 243 236 226 212 194 177 159 146 136 130 121 104 97 86
96 110 120 126 127 138 147 164 180 212 235 251 252 243 225 203 182
162 143 128 117 109 103 92 82 73 65 83 102 110 116 124 131 142
159 183 211 235 254 260 242 218 193 166 140 123 111 104 97 92 82
68 61 61 79 96 105 113 120 130 145 165 188 213 238 257 263 244
218 195 168 140 123 110 103 98 90 75 65 60 59 75 94 104 109
117 130 149 170 192 217 242 260 268 249 224 199 168 143 125 113 105
100 94 82 65 60 61 72 89 102 107 115 131 152 174 197 222 247
0      0      0

```

For ease of input it is best if you copy the i-tables files you want to load into the Library into the folder containing the Perfect Lite software eg. c:\ple. Also, only load files that you really need don't clutter up the Library i-tables that you are never going to use.

After starting Perfect Lite select the **Luminaire Library Manager** option from the **Perfect Lite menu**.

```
[ PERFECT LITE MENU ]
Program setup
Luminaire Library manager...
Exterior lighting design...
Zebra crossing lighting design
Upward Waste Light Ratio
Terminate Perfect Lite
```

Then select **Add photometric data to PLE Library** from the **Luminaire Library menu**

```
[ LUMINAIRE LIBRARY MENU ]
Add photometric data to PLE Library...
Print photometric data...
Summary listing of luminaires...
Delete/Change luminaire code numbers...
Library file compression
Intensity distribution curves
Update index listing files
Replace luminaire description
<Esc> to quit Menu
```

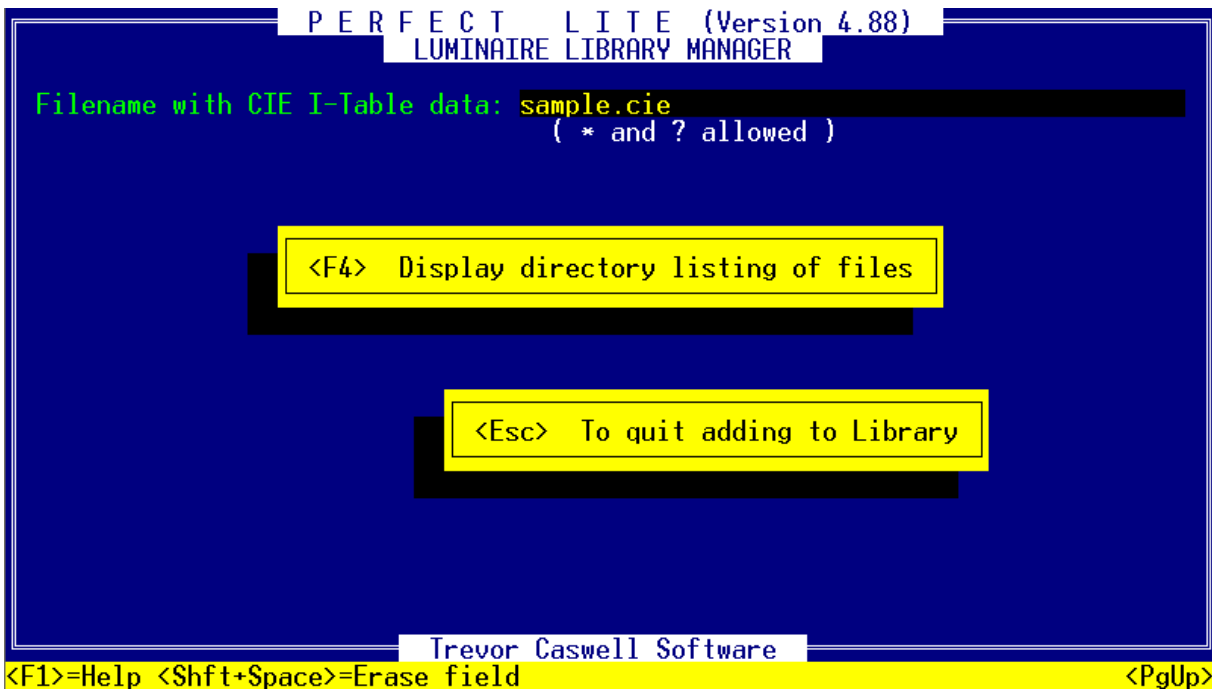
You would then select the respective manufacturer name from the subsequent menu. In our example we have selected **Manufacturer 17**. The values on this menu (ie. Manufacturer names) are as set on page 6 under the **Program Setup** option from the **Perfect Lite menu**. "Manufacturer #1", "Manufacturer #2" etc. are only default names.

```
[ SELECT MANUFACTURER ]
▲ KEYLOGIC-EXLITES (ie. Code Nos. 14001 to 14999)
Eanufacturer #15 (ie. Code Nos. 15001 to 15999)
Manufacturer #16 (ie. Code Nos. 16001 to 16999)
Manufacturer #17 (ie. Code Nos. 17001 to 17999)
Manufacturer #18 (ie. Code Nos. 18001 to 18999)
Manufacturer #19 (ie. Code Nos. 19001 to 19999)
Manufacturer #20 (ie. Code Nos. 20001 to 20999)
Manufacturer #21 (ie. Code Nos. 21001 to 21999)
Manufacturer #22 (ie. Code Nos. 22001 to 22999)
Manufacturer #23 (ie. Code Nos. 23001 to 23999)
Manufacturer #24 (ie. Code Nos. 24001 to 24999)
Manufacturer #25 (ie. Code Nos. 25001 to 25999)
Manufacturer #26 (ie. Code Nos. 26001 to 26999)
Manufacturer #27 (ie. Code Nos. 27001 to 27999)
Manufacturer #28 (ie. Code Nos. 28001 to 28999)
Manufacturer #29 (ie. Code Nos. 29001 to 29999)
Manufacturer #30 (ie. Code Nos. 30001 to 30999)
Manufacturer #31 (ie. Code Nos. 31001 to 31999)
<Esc> to quit Menu
```

You then select whether the data you are going to input is in the CIE/SAASTAN or IESNA format. In this example we will use a CIE/SAASTAN formatted file.



On the next screen you enter the name of the i-table file you want to add to the Library. If you have a series of files you can use the characters *.cie in the filename field. This way the program will process one file at a time without you having to input the actual name. In our example will use the file 'sample.cie'. You can also specify a drive letter & folder name (eg. D:\idata\ preceding the file name. Please remember that this program does not support long filenames. Filenames have to be in the 8.3 format eg. filename.ext



On the subsequent screen you would enter a code number ie. last 3 digits as the first 2 have already been set by the manufacturer number previously selected. On the lines below you enter a description for the luminaire and the lamps contained within. It is always a good idea to include the original file name as part of the description.

```
PERFECT LITE (Version 4.88)
LUMINAIRE LIBRARY MANAGER

Filename with CIE I-Table data: SAMPLE.CIE
    Luminaire found on disk: 1 250W SCO SON-E
Luminaire code number: 17345      [ 170 = ignore this luminaire ]
Luminaire Description: Sample Luminaire      [sample.cie]
    Lamps etc. : 250 watt HPS

Trevor Caswell Software
<F1>=Help <Shft+Space>=Erase field <F9>=Ditto field
```

Press enter on the screen for the program to add the luminaire into the Library. A couple of messages will flash onto the screen indicating progress. Once completed the screen will return to where you can nominate & add another file. If you don't want to add more files then simply press the 'Escape' key several times to return to the Perfect Lite menu. Along the way you may encounter the following screen.

```
PERFECT LITE (Version 4.88)

**** LIBRARY FILES HAVE BEEN ALTERED ****

[ <F1> for Help ]
Create a backup copy of Library ? Yes No

Trevor Caswell Software
```

Generally you would select **Yes**.